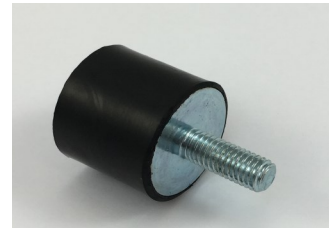


Description:

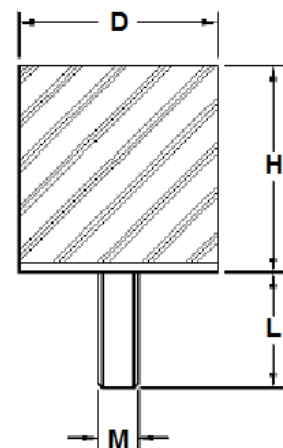
Vibracoustics Ltd rubber to metal bonded Circular Buffers are available in a comprehensive range of sizes and in several compounds in each size. The buffers are produced with stud type fixing.



Dimensions (mm)				Nominal Maximum Values		
				Continuous Load (N)		
D	H	M	L	N45	N55	N70
10	10	M4	10	22	40	70
10	15	M4	10	33	60	105
15	8	M4	10	27	50	87
15	15	M4	10	66	120	210
20	10	M6	18	68	125	218
20	15	M6	18	110	200	350
20	20	M6	18	99	180	315
20	25	M6	18	99	180	315
25	10	M6/M8	18/20	154	280	490
25	15	M6/M8	18/20	148	270	472
25	20	M6/M8	18/20	143	260	455
25	25	M6/M8	18/20	137	250	437
25	30	M6/M8	18/20	132	240	420
30	15	M8	20	275	500	875
30	20	M8	20	220	400	700
30	25	M8	20	209	380	665
30	30	M8	20	192	350	612
30	40	M8	20	178	325	568
40	20	M8/M10	23/28	385	700	1225
40	30	M8/M10	23/28	385	700	1225
40	35	M8/M10	23/28	357	650	1137
40	40	M8/M10	23/28	357	650	1137
50	20	M10	28	990	1800	3150
50	25	M10	28	880	1600	2800
50	30	M10	28	715	1300	2275
50	40	M10	28	605	1100	1925
50	45	M10	28	550	1000	1750
50	50	M10	28	550	1000	4200
70	45	M10/M12	28/37	1320	2400	4200
75	25	M12	37	2475	4500	7875
75	40	M12/M16	37/42	1650	3000	5250
75	50	M12/M16	37/42	1320	2400	4200
75	55	M12/M16	37/42	1320	2400	4200
100	40	M16	41	3850	7000	12250
100	55	M16	41	2750	5000	8750
100	60	M16	41	2585	4700	8225
100	75	M16	41	2310	4200	7350
150	50	M16/M20	45	8800	16000	28000
150	55	M16/M20	45	8360	15200	26600
150	60	M16/M20	45	7975	14500	25375
150	75	M16/M20	45	6875	12500	21875
200	100	M20	45	19800	36000	63000

Specification:

Standard parts are natural rubber with mild steel metals in zinc plate and chrome passivate finish. Alternate elastomers and stainless steel metals are available on request.



All parts listed are from our standard stock range.

For non standard sizes please contact our technical department.